



ASPECTS BESPOKE

DESIGNING YOUR DREAM WARDROBES

15 MINUTE READ

A GUIDE IN ORGANISATION & DESIGN

Imagine unwinding in your bedroom – a relaxing escape, free from clutter and overflowing drawers.

No more frantic searching for that perfect outfit, instead rows of perfectly hung, folded, and organised clothes await.

This becomes your reality with perfectly designed wardrobes. So let us take you through the excitement of designing and planning your new made-to-measure wardrobes!

Let's begin honestly by saying fitted wardrobes and custom furniture is not for everyone, it is not a cookie cutter, one size fits all solution.



However, if you are design conscious and appreciate attention-to-detail, while always looking for ways to improve your home's appearance, this is the perfect option for you.

WHY BESPOKE?

Think about it...
you access your wardrobe
an average of 800 times a
year, shouldn't that
experience be smooth
and hassle-free?

Flatpack or shop bought wardrobes might seem like a suitable choice but they have limitations and often fall short in fitting your exact bedroom dimensions while only being available in a limited range of colours and styles.




With custom-fitted wardrobes you can say goodbye to sagging shelves and rubbing doors, transforming your daily routine into a joyful one.

Here is the best opportunity to maximise storage throughout your whole bedroom with custom-sized cabinets & doors.

Optimising your living space and reflect your discerning taste- It's a testament to your appreciation for quality, functionality, and timeless design.

Your home is unique, we think your furniture should be too.

Now for the fun part – Lets start creating!



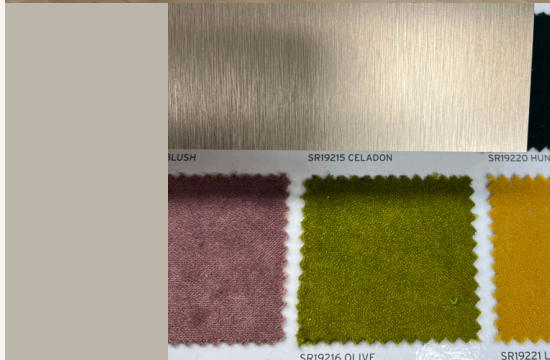
“ I CANNOT RECOMMEND ASPECTS
BESPOKE HIGHLY ENOUGH...
NOTHING WAS TOO MUCH TROUBLE
AND I'M SO THRILLED WITH OUR NEW
FITTED WARDROBES AND DRAWERS, I
KEEP GOING UPSTAIRS TO LOOK AT
THEM!”

KATIE B, 2022

CREATING THE PERFECT WARDROBES

EMBRACE INSPIRATION

Pinterest and Instagram are treasure troves of design inspiration! Browse images of custom bedroom furniture and fitted wardrobes that resonate with your personal style, while in keeping with the overall look of your home.



Do you find yourself drawn to a specific style? Has your friends stunning furniture captured your imagination?

Maybe you have seen exactly what you would love on a TV show, either way snap a picture and we can use this to start your design process off.



DURING YOUR DESIGN VISIT WE WILL
HELP YOU FIND INSPIRATION, SHOW
YOU MATERIAL & COLOUR SAMPLES
AND GIVE SUITABLE SUGGESTIONS FOR
YOUR BEDROOM BEFORE PRODUCING
REALISTIC CGI DESIGNS TO BRING
YOUR VISION TO LIFE.

PLAN OUT THE SPACE

Be ruthless- having fitted wardrobes is a great opportunity to clear and sell any items you haven't worn in years to start with a clean slate.

Ask yourself the following questions:

What clothes & accessories will you use daily and which ones are reserved for special events once a year?

Would you like your workout or yoga gear easily accessible?

Would you prefer to hang items on rails, fold onto shelves or put away in drawers?

How about a hidden but integrated laundry basket keeping clothes off the floor?

A suggestion if you are more limited on space is opting for an open plan walk-in dressing room with no doors – they look stunning especially with well planned lighting while being considerate of budget.

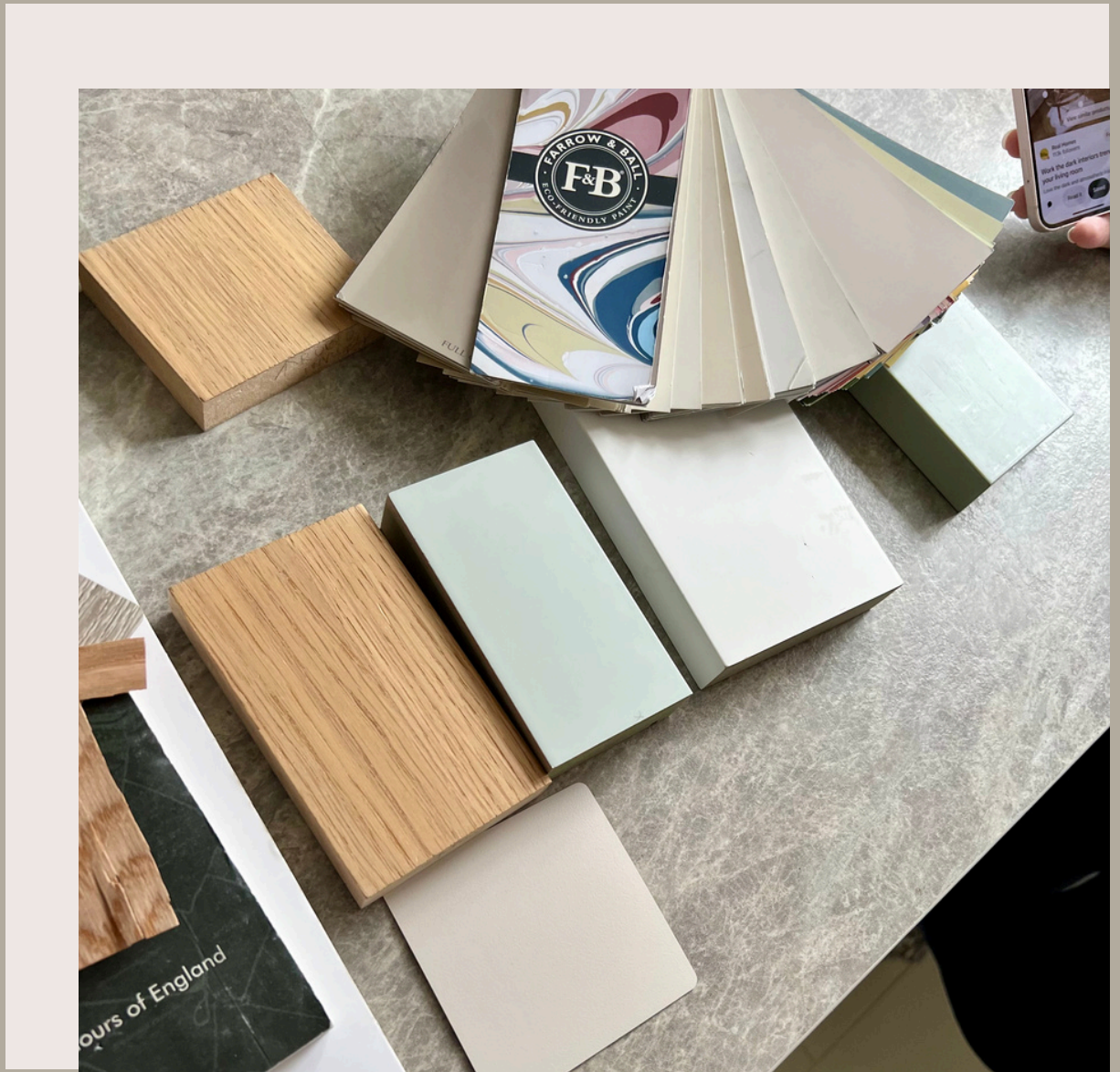
If you don't have a clue where to start then book a call with us [here](#) and we can assist you with the process.

Bonus Tip:

Plan for future growth! Don't try and fill each section up to the brim! Leave space in drawers and add extra shelves and hanging space to accommodate your ever-evolving wardrobe. Having more space allows for easier cleaning and re-organisation.

PRODUCT & MATERIAL CHOICE

There seems to be an unlimited number of colours, finishes, textures and shapes to choose from with wardrobes and finding the most suitable will take expertise. With so many to choose from it is tricky to know where to begin.



Using our years of experience at Aspects Bespoke we like to explain the pros and cons with complete transparency, showing samples of each material during your design visit. To give you an idea, here is a good overview below of the most popular choices:

PRODUCT & MATERIAL CHOICE

SOLID WOOD & VENEERS


Solid woods and real veneers are the epitome of timeless luxury. Light woods like oak & ash suit a Scandinavian or contemporary design while darker options like walnut, which have seen a large resurgence in the past year, bring a real weight and character to the furniture.

Cabinets made from oak or walnut veneers, ensure they are stable, resistant to shrinkage and durable when cared for correctly.



The beauty with natural materials is the extensive list of options for stain, oil or finish if you are looking for an exact shade or colour.

We have preferred manufacturers to ensure the veneers are sustainably sourced and free of large defects and damage. Furniture made with natural solid wood or veneers take more time, consideration and planning when 'grain matching' across doors and drawers.

The image shows the interior of a light-colored wooden cabinet. At the top, there is a single shelf. Below it, there are three drawers stacked vertically. The wood grain is consistent across all surfaces, including the shelves, drawers, and the inner walls of the cabinet, demonstrating a high-quality grain matching process. The cabinet doors are open, revealing the interior structure and the drawers. The lighting is even, highlighting the natural texture of the wood.

GRAIN MATCHING' IS PARTICULARLY
IMPORTANT WHEN LOOKING A MORE
POLISHED AND PLEASING DESIGN,
CREATING A SENSE OF FLOW AND
CONTINUITY IN THE FURNITURE

PRODUCT & MATERIAL CHOICE

DECORS & MELAMINE

Decors refer to the aesthetic finishes & wraps applied to the wardrobe and cabinet itself and while they can sometimes limit design options, it is a popular choice for clients looking for a realistic wood or textured effect with less maintenance.

Most vinyl decors come in a matte or gloss finish with a range of colours to choose between.

Melamine in particular is a popular choice for its affordability, range of colours, and ease of cleaning.

MDF, HDF, AND FIBREBOARDS.

MDF in particular has given clients concern for years and contrary to popular belief MDF is a perfectly safe and well-regulated material being unlikely to warp, bow or become unstable over time.

While this is true, quality is key, the producer and brand matter. You will find off the shelf MDF is a world away from the furniture grade, high density fibreboard used and most furniture makers prefer to use.

This specialist HDF boasts exceptionally smooth faces and supreme durability but is also completely environmentally conscious, enabling an almost unlimited number of design and shape options that can be added to your wardrobes before being painted or sprayed in your ideal colour.

PRODUCT & MATERIAL CHOICE

PAINTED OR SPRAY FINISHED

A spray finished exterior is our most popular choice for clients as it means your furniture can be colour matched to any Brand of paint- even so, 85% of our clients opt for a Farrow & Ball or Little Greene colour!



We are even able to scan material or upholstery to colour match soft furnishings in your home, any colour is possible which means it can be completely personal to you.

Spraying is an art to master and involves a multi-stage process of sanding, priming and top coating to enable a perfectly smooth, flawless finished product.

The result is turning your bespoke wardrobes into a stunning focal point.

With certain designs or traditional styles we will recommend a hand painted finish to suit the era, this is achieved by spraying the initial coats on the furniture and then having our painter brush finish the top coat.



ADDITIONALLY, WE OFFER OTHER
MORE UNIQUE FINISHES INCLUDING
POLISHED HIGH GLOSS, LIQUID METAL
WORK, GILDING AND RESIN.

EXTRAS

The finishing touches really are where the magic lies in made to measure custom wardrobes.

Elevating your wardrobe to the next level and giving you the freedom to really personalise your wardrobes by adding functionality, time saving ideas or just pure luxury.

LIGHTING

There is no better way to make a statement or create a relaxing haven than with the addition of lighting to your wardrobes.

Using the latest in lighting tech we can seamlessly integrate it into your wardrobes, providing you with different options to choose from.

Warm or natural white LED strips are the most popular choice with our clients ensuring optimum energy efficiency spotless glow and show stopping visuals.

Alternatively, we offer spot lights & traditional picture lights which have many of the same properties but suit furniture of different styles and eras.

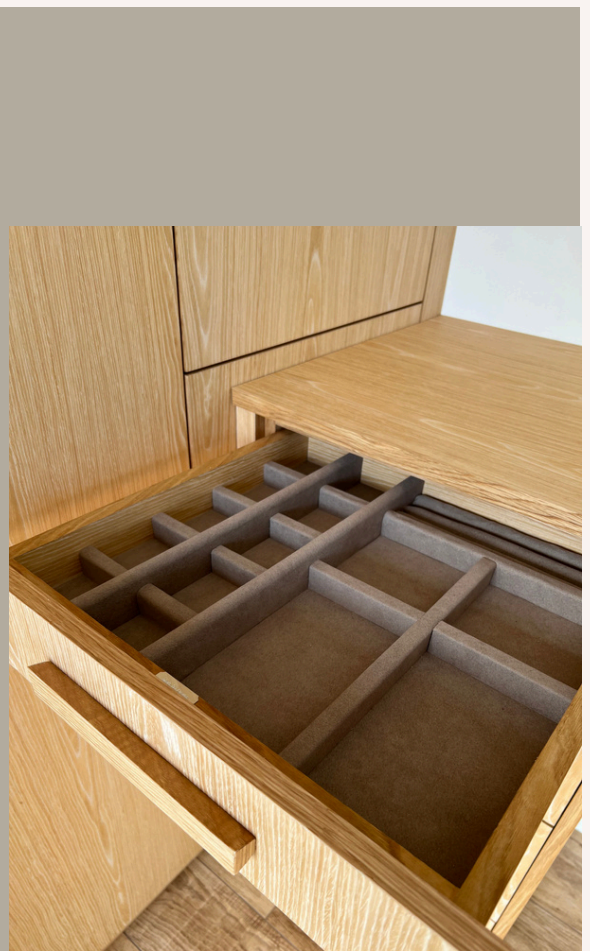


EXTRAS

JEWELLERY & WATCH ORGANISERS

Are you looking to make a showpiece of your collection by adding a feature glass display of your most treasured jewellery & watches or maybe you prefer a make-up drawer with each product in the correct place every morning

In addition, if security is a priority we can install hidden safes and lock boxes for your valuables.



HIS & HERS

Choose from various design features to make planning and finding your outfits a breeze- Extra tall pull-down hanging rails, shoe pull-outs or trouser and belt racks are just a few of the options.

EXTRAS

GLASS & MIRRORS

Enhance and increase the sense of space in your room by incorporating mirrors into your wardrobe design. Mirrors make your room appear larger, reflecting light from available sources and adding a touch of glamour and elegance.

The reflective properties of glass can also enhance the visual appeal of your living space especially when integrated into worktops or shelves

FABRIC & WALLPAPER

Using fabric and wallpaper is a luxurious addition which adds warmth and texture to your bedroom wardrobes. Fabric lined drawers or wallpapered door panels are a great place to start with plush upholstered stools being popular for clients looking for a dressing table addition to their bedroom.



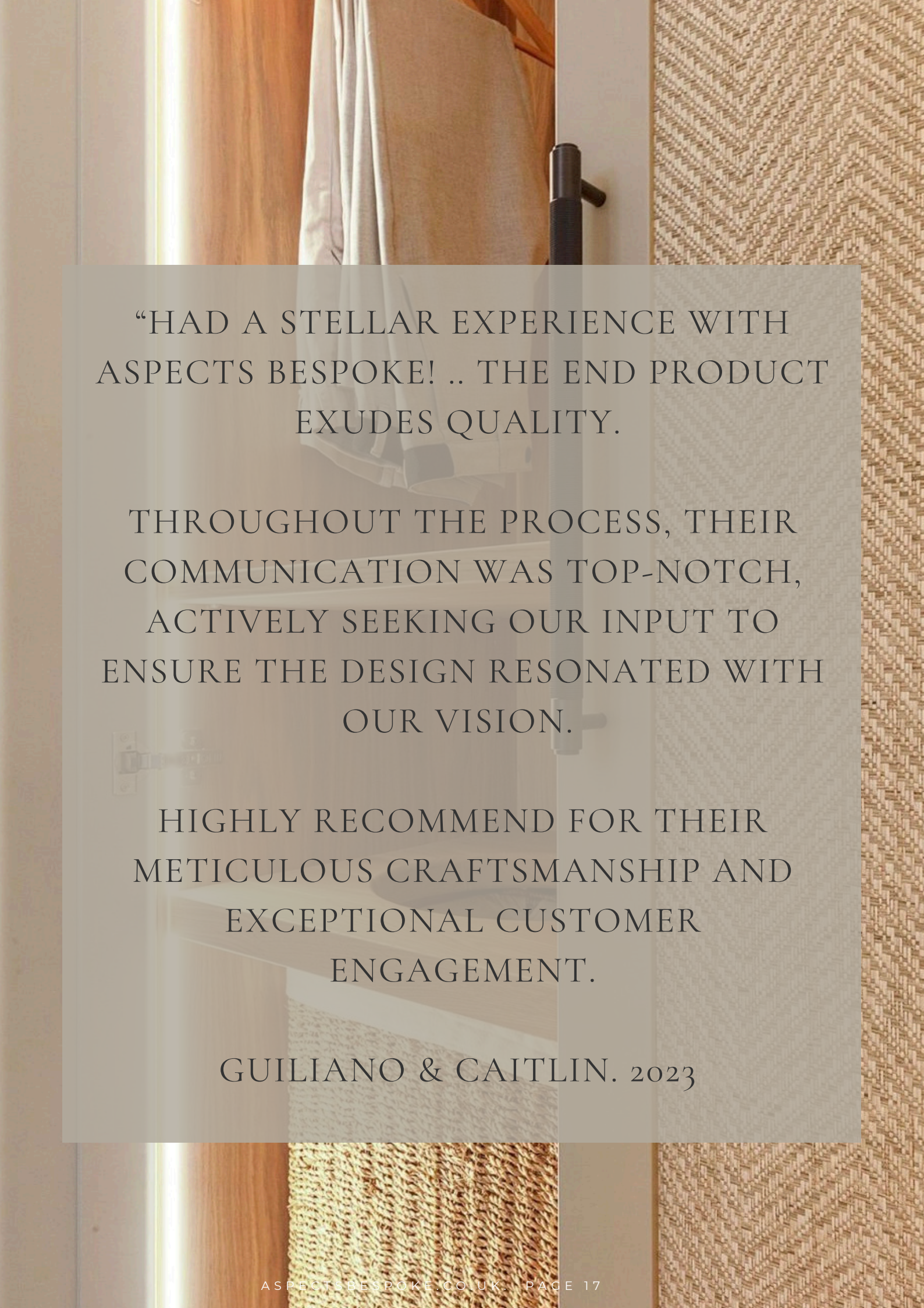
EXTRAS

ACCOMPANYING FURNITURE

Your custom bedroom furniture does not have to end with just wardrobes, with several additions to complete your bedroom.

Our most popular choice is a mirrored dressing table with upholstered stools or bespoke bedside tables and drawer units that complement the colour and style of your new wardrobes.





“HAD A STELLAR EXPERIENCE WITH
ASPECTS BESPOKE! .. THE END PRODUCT
EXUDES QUALITY.

THROUGHOUT THE PROCESS, THEIR
COMMUNICATION WAS TOP-NOTCH,
ACTIVELY SEEKING OUR INPUT TO
ENSURE THE DESIGN RESONATED WITH
OUR VISION.

HIGHLY RECOMMEND FOR THEIR
METICULOUS CRAFTSMANSHIP AND
EXCEPTIONAL CUSTOMER
ENGAGEMENT.

GUILIANO & CAITLIN. 2023

HOW ARE THEY MADE AND INSTALLED?

The main concern our clients have is how disruptive will the process be? Or will you take over my house for weeks to make them?

To begin with you will deal with the same person throughout the whole process, so you have a personal contact to answer any questions and guide you throughout.



Next and most importantly, all of our furniture is made and largely assembled at our workshop in Windsor leaving just 1 or 2 days in your home to install your new wardrobes.



A man with curly hair and a beard, wearing a dark blue or black long-sleeved shirt, is focused on his work. He is wearing a Carhartt logo patch on his left chest and a white geometric patch on his right chest. He is working on a light-colored wooden wardrobe drawer, which is partially open. The background shows a wall with vertical wooden slats and a warm, yellowish light source at the top.

WE INSTALL ALL FURNITURE WITH A
LIFETIME GUARANTEE ON HARDWARE
& HINGES

AND YOUR HOME IS LEFT COMPLETELY
DUST FREE AND EXACTLY AS WE FOUND
IT, THE ONLY ADDITION BEING YOUR
NEW WARDROBES!

AFTERCARE

Your journey with us does not end at the installation as we are here to give you complete confidence and peace of mind, providing after care instructions to make sure your wardrobes look their best for years to come.

Not only that but, we are only a phone call or message away, happy to answer any questions you have!

READY TO DESIGN YOUR DREAM WARDROBES?

If you live in Berkshire or Surrey and are looking for a local furniture company to create your bespoke wardrobes then here's what to do next:

[BOOK A CALL](#)

If you just have questions or you need some advice along the way message us on whatsapp

[WHATSAPP](#)

Would you like to see how we make our furniture ?
Follow us on instagram to see behind the scenes of each wardrobe project

[INSTAGRAM](#)